

IBCS

0845 208 8748 | www.ibcs.co.uk

INDUSTRIAL BATTERY
AND CHARGER SERVICES LTD



IBCS

INDUSTRIAL BATTERY AND CHARGER SERVICES LTD

ALL ENQUIRIES: **0845 208 8748** | www.ibcs.co.uk

Head Office:

Industrial Battery and Charger Services Ltd | Unit 2 Eden Close
Hellaby Industrial Estate | Rotherham | South Yorkshire | S66 8RW

The **Intelligent Choice**
TO KEEP YOUR BUSINESS MOVING

APPLICATIONS: FORKLIFTS | CLEANING MACHINES | ACCESS PLATFORMS | ELECTRIC TOW TRACTORS | ELECTRIC VEHICLES

IBCS

0845 208 8748 | www.ibcs.co.uk

INDUSTRIAL BATTERY AND CHARGER SERVICES LTD

CONTENTS

Traction Batteries & Cells	1
Battery Suppliers - Our Brands	2
Cell Structure Diagram	3
Sunlight Technical Data	4-5
Eternity Technical Data	6-7
Traction Battery Chargers	9
Battery Chargers - Our Brands	10
Fronius Chargers	11-13
Axima Chargers	14-18
Powergen Chargers	19-21
The Complete Service Solution	23
Nationwide Coverage	24
Service and Accessory Options	25-27
The Total Hire Solution	29
Hire and Rental Options	30-31
Quality, Warranty, Training, Health & Safety	32
Notes	33

Traction Batteries and Cells



The **Intelligent Choice**
TO KEEP YOUR BUSINESS MOVING

APPLICATIONS: FORKLIFTS | CLEANING MACHINES | ACCESS PLATFORMS | ELECTRIC TOW TRACTORS | ELECTRIC VEHICLES

IBCS

INDUSTRIAL BATTERY AND CHARGER SERVICES LTD

Established in 1984 Industrial Battery and Charger Services Ltd (IBCS) is one of the largest independent specialist battery and charger companies in the UK. With over 30 years experience we provide a rapid and dependable sales and service facility for all users of batteries and chargers within the TRACTION and STANDBY POWER industry.

One of the fastest growing companies in our field of work we have become the sensible option to support your business. Our brands include **Sunlight**, **Eternity** and **GNB**. Applications range from simple cleaning machines to submarine.

SUNLIGHT BATTERIES

Available in a wide range of capacity and size options the batteries meet international DIN and BS standards.

Fully integrated state of the art manufacturing processes which start with the production of lead oxide and red lead (100%) at Sunlight's industrial facilities, pass through fully automated production facilities including the use of cast on straps and finish with the activation of the cells through a modern jar formation facility. This ensures a value added product with high energy density, performance and durability.



SUNLIGHT
Reliable Battery Solutions

ETERNITY TECHNOLOGY BATTERIES



Although Eternity Technologies is the newest and most vibrant Motive Power battery company in the world it derives its heritage from over 100 years of developments in lead acid battery technology.

This know how has designed and built the most modern and up to date Motive Power manufacturing facility in the world. Eternity specialise in the manufacture and supply of industry leading high performance Tubular Technology Motive Power cells. Utilising the latest manufacturing techniques in plate making, cell assembly and formation which when combined with the best design, to deliver the high quality and performance demanded by the Materials Handling market as well as other Motive Power applications.

ETERNITY
TECHNOLOGIES

APPLICATIONS: FORKLIFTS | CLEANING MACHINES | ACCESS PLATFORMS | ELECTRIC TOW TRACTORS | ELECTRIC VEHICLES

CELLS

1 POSITIVE PLATE

- Tubular plate design
- Alloy with optimised Sb (antimony) concentration
- Red Lead in-house production by Pure Lead 99.99%
- Dry Filling with Red Lead
- Increased gauntlet diameter

- ✓ Stable cycling performance and longer service life
- ✓ Lower water consumption, lower temperature increase, high and stable final charging voltage, less corrosion
- ✓ 100% of nominal capacity in the first 3-5 cycles
- ✓ Increased capacity

2 NEGATIVE PLATE

- Pasted lead grid & advanced Negative Active Mass (NAM) composition
- Alloy with optimised Sb (antimony) concentration

- ✓ Stable cycling performance
- ✓ Lower water consumption

3 SEPARATOR

- Polyethylene roll separator with high porosity grade material envelopes the positive plates

- ✓ Electrical resistance improved by up to 20% over conventional separators
- ✓ High porosity enables superior battery capacity
- ✓ Acid displacement decreased by 15% resulting in higher capacity
- ✓ High oxidation resistance and high porosity ensures longer service life
- ✓ Short circuits avoided

4 GAUNTLET

- Reinforced non-woven polyester material with high fibres bonding and smaller pores size

- ✓ Better utilisation of active material
- ✓ Eliminates active mass shedding
- ✓ Reduces corrosion of spine
- ✓ Longer service life

5 BOTTOM BAR

- Ultrasonic welding

- ✓ More secure fitment with gauntlet
- ✓ Growth of positive spine into bottom bar's cavity is easily accommodated
- ✓ Retains active material on the spines

7 CELL CONTAINER

- Polypropylene (PP) Lid welding, trimming and tightness control

- ✓ Boxes and lids are resistant and thermowelded to prevent electrolyte leakage

8 VENT PLUG

- Electrolyte basket level marking, specially designed lid, anti-surge baffle

AUTOMATIC WATER FILLING PLUG

- The plug consists of a float and a shut-off valve, with white level indicator

- ✓ Ensures the optimum electrolyte level in the battery
- ✓ No need of removing plugs and topping up the cells manually
- ✓ Reduces excessive labour cost
- ✓ Eliminates the risk of direct contact with battery acid

9 POLE TERMINAL

- Advanced design of pole post and its sealing to the lid. Rubber ring with optimised hardness and acid resistance

- ✓ Operational safety
- ✓ Perfect sealing
- ✓ Low maintenance requirements
- ✓ Better current conductivity
- ✓ Positive plates expansion is safely absorbed
- ✓ Prevention of top lid cracks and acid leakages

10 POLE BRIDGE

- Terminal bridge manufactured with Cast On Strap process

- ✓ Consistent and uniform pole bridge composition
- ✓ Increased robustness and durability
- ✓ Perfect connection for poles-bridge-plate block as a whole



SUNLIGHT DIN STANDARD



SUNLIGHT BRITISH STANDARD



Cell Type	Length (b)	Width (l)	Height 1	Height 2	Weight
2PZS120	198	47	343	370	8.3
3PZS180	198	65	343	370	11.7
4PZS240	198	83	343	370	15.2
5PZS300	198	101	343	370	18.8
6PZS360	198	119	343	370	22.4
7PZS420	198	137	343	370	26.0
8PZS480	198	155	343	370	29.6
9PZS540	198	174	343	370	33.2
10PZS600	198	192	343	370	36.8

Cell Type	Length (b)	Width (l)	Height 1	Height 2	Weight
2PZS230	198	47	548	575	13.4
3PZS345	198	65	548	575	19.2
4PZS460	198	83	548	575	24.9
5PZS575	198	101	548	575	30.7
6PZS690	198	119	548	575	36.4
7PZS805	198	137	548	575	42.1
8PZS920	198	155	548	575	48.0
9PZS1035	198	174	548	575	53.6
10PZS1150	198	192	548	575	59.4

Cell Type	Length (b)	Width (l)	Height 1	Height 2	Weight
2PZB84	158	45	331	358	6.9
3PZB126	158	61	331	358	9.4
4PZB168	158	77	331	358	11.9
5PZB210	158	93	331	358	14.5
6PZB252	158	109	331	358	17.1
7PZB294	158	125	331	358	19.7
8PZB336	158	141	331	358	22.2

Cell Type	Length (b)	Width (l)	Height 1	Height 2	Weight
2PZB170	158	45	570	597	12.3
3PZB255	158	61	570	597	17.0
4PZB340	158	77	570	597	21.6
5PZB425	158	93	570	597	26.3
6PZB510	158	109	570	597	30.9
7PZB595	158	125	570	597	35.6
8PZB680	158	141	570	597	40.4
9PZB765	158	157	570	597	44.8
10PZB850	158	173	570	597	49.7

Cell Type	Length (b)	Width (l)	Height 1	Height 2	Weight
2PZS160	198	47	408	435	9.7
3PZS240	198	65	408	435	13.8
4PZS320	198	83	408	435	18.0
5PZS400	198	101	408	435	22.2
6PZS480	198	119	408	435	26.4
7PZS560	198	137	408	435	30.6
8PZS640	198	155	408	435	34.9
9PZS720	198	174	408	435	39.2
10PZS800	198	192	408	435	43.5

Cell Type	Length (b)	Width (l)	Height 1	Height 2	Weight
2PZS250	198	47	568	595	14.1
3PZS375	198	65	568	595	20.2
4PZS500	198	83	568	595	26.3
5PZS625	198	101	568	595	32.5
6PZS750	198	119	568	595	38.6
7PZS875	198	137	568	595	44.7
8PZS1000	198	155	568	595	50.8
9PZS1125	198	174	568	595	57.0
10PZS1250	198	192	568	595	63.2

Cell Type	Length (b)	Width (l)	Height 1	Height 2	Weight
2PZB110	158	45	401	428	8.4
3PZB165	158	61	401	428	11.5
4PZB220	158	77	401	428	14.6
5PZB275	158	93	401	428	17.8
6PZB330	158	109	401	428	20.9
7PZB385	158	125	401	428	24.0
8PZB440	158	141	401	428	27.2
9PZB495	158	157	401	428	30.3
10PZB550	158	173	401	428	33.3

Cell Type	Length (b)	Width (l)	Height 1	Height 2	Weight
2PZB200	158	45	606	633	12.9
3PZB300	158	61	606	633	17.7
4PZB400	158	77	606	633	22.6
5PZB500	158	93	606	633	27.5
6PZB600	158	109	606	633	32.4
7PZB700	158	125	606	633	37.3
8PZB800	158	141	606	633	42.2
9PZB900	158	157	606	633	46.8
10PZB850	158	173	570	597	49.7

Cell Type	Length (b)	Width (l)	Height 1	Height 2	Weight
2PZS180	198	47	478	505	11.9
3PZS270	198	65	478	505	16.7
4PZS360	198	83	478	505	21.3
5PZS450	198	101	478	505	26.0
6PZS540	198	119	478	505	30.7
7PZS630	198	137	478	505	35.4
8PZS720	198	155	478	505	40.1
9PZS810	198	174	478	505	44.8
10PZS900	198	192	478	505	49.6

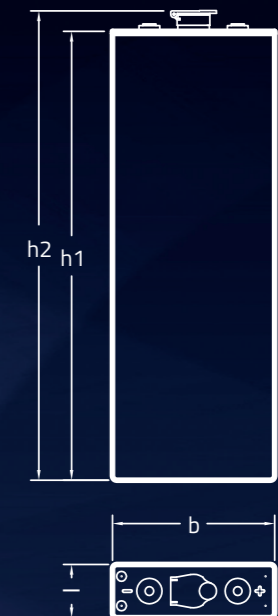
Cell Type	Length (b)	Width (l)	Height 1	Height 2	Weight
2PZS280	198	47	688	715	18.9
3PZS420	198	65	688	715	26.0
4PZS560	198	83	688	715	33.1
5PZS700	198	101	688	715	40.2
6PZS840	198	119	688	715	47.5
7PZS980	198	137	688	715	54.8
8PZS1120	198	155	688	715	62.2
9PZS1260	198	174	688	715	69.8
10PZS1400	198	192	688	715	77.4

Cell Type	Length (b)	Width (l)	Height 1	Height 2	Weight
2PZB130	158	45	457	484	9.6
3PZB195	158	61	457	484	13.2
4PZB260	158	77	457	484	16.8
5PZB325	158	93	457	484	20.5
6PZB390	158	109	457	484	24.1
7PZB455	158	125	457	484	27.7
8PZB520	158	141	457	484	31.4
9PZB585	158	157	457	484	35.0
10PZB650	158	173	457	484	38.5

Cell Type	Length (b)	Width (l)	Height 1	Height 2	Weight
2PZS210	198	47	514	541	12.9
3PZS315	198	65	514	541	18.4
4PZS420	198	83	514	541	23.9
5PZS525	198	101	514	541	29.4
6PZS630	198	119	514	541	35.0
7PZS735	198	137	514	541	40.5
8PZS840	198	155	514	541	46.0
9PZS945	198	174	514	541	51.5
10PZS1050	198	192	514	541	57.1

Cell Type	Length (b)	Width (l)	Height 1	Height 2	Weight
2PZS310	198	47	713	740	19.1
3PZS465	198	65	713	740	26.5
4PZS620	198	83	713	740	33.9
5PZS775	198	101	713	740	42.0
6PZS930	198	119	713	740	50.0
7PZS1085	198	137	713	740	58.1
8PZS1240	198	155	713	740	66.2
9PZS1395	198	174	713	740	74.4
10PZS1550	198	192	713	740	82.5

Cell Type	Length (b)	Width (l)	Height 1	Height 2	Weight
2PZB150	158	45	514	541	10.9
3PZB225	158	61	514	541	14.9
4PZB300	158	77	514	541	19.0
5PZB375	158	93	514	541	23.1
6PZB450	158	109	514	541	27.3
7PZB525	158	125	514	541	31.4
8PZB600	158	141	514	541	35.6
9PZB675	158	157	514	541	39.5
10PZB750	158	173	514	541	43.7



APPLICATIONS: FORKLIFTS | CLEANING MACHINES | ACCESS PLATFORMS | ELECTRIC TOW TRACTORS | ELECTRIC VEHICLES

APPLICATIONS: FORKLIFTS | CLEANING MACHINES | ACCESS PLATFORMS | ELECTRIC TOW TRACTORS | ELECTRIC VEHICLES

ETERNITY DIN STANDARD



ETERNITY BRITISH STANDARD



Cell Type	Length (b)	Width (l)	Height 1	Height 2	Weight
2PZS120	198	47	334	364	8.4
3PZS180	198	65	334	364	11.8
4PZS240	198	83	334	364	15.3
5PZS300	198	101	334	364	18.7
6PZS360	198	119	334	364	22.3
7PZS420	198	137	334	364	25.8
8PZS480	198	155	334	364	29.3
9PZS540	198	173	334	364	32.7
10PZS600	198	191	334	364	36.2

Cell Type	Length (b)	Width (l)	Height 1	Height 2	Weight
2PZS230	198	47	542	572	14.1
3PZS345	198	65	542	572	18.7
4PZS460	198	83	542	572	25.1
5PZS575	198	101	542	572	30.2
6PZS690	198	119	542	572	35.4
7PZS805	198	137	542	572	41.3
8PZS920	198	155	542	572	47.0
9PZS1035	198	173	542	572	52.3
10PZS1150	198	191	542	572	58.2

Cell Type	Length (b)	Width (l)	Height 1	Height 2	Weight
2PZS160	198	47	397	427	10.0
3PZS240	198	65	397	427	14.3
4PZS320	198	83	397	427	18.6
5PZS400	198	101	397	427	22.9
6PZS480	198	119	397	427	27.3
7PZS560	198	137	397	427	31.6
8PZS640	198	155	397	427	36.0
9PZS720	198	173	397	427	40.2
10PZS800	198	191	397	427	44.6

Cell Type	Length (b)	Width (l)	Height 1	Height 2	Weight
2PZS250	198	47	569	599	14.8
3PZS375	198	65	569	599	20.4
4PZS500	198	83	569	599	26.4
5PZS625	198	101	569	599	32.7
6PZS750	198	119	569	599	39.1
7PZS875	198	137	569	599	43.6
8PZS1000	198	155	569	599	51.4
9PZS1125	198	173	569	599	57.1
10PZS1250	198	191	569	599	63.3

Cell Type	Length (b)	Width (l)	Height 1	Height 2	Weight
2PZS180	198	47	464	494	11.8
3PZS270	198	65	464	494	16.7
4PZS360	198	83	464	494	21.5
5PZS450	198	101	464	494	26.5
6PZS540	198	119	464	494	31.2
7PZS630	198	137	464	494	36.0
8PZS720	198	155	464	494	41.1
9PZS810	198	173	464	494	45.9
10PZS900	198	191	464	494	50.9

Cell Type	Length (b)	Width (l)	Height 1	Height 2	Weight
2PZS280	198	47	683	713	16.0
3PZS420	198	65	683	713	23.0
4PZS560	198	83	683	713	30.1
5PZS700	198	101	683	713	37.0
6PZS840	198	119	683	713	44.7
7PZS980	198	137	683	713	50.7
8PZS1120	198	155	683	713	58.0
9PZS1260	198	173	683	713	64.7
10PZS1400	198	191	683	713	72.0

Cell Type	Length (b)	Width (l)	Height 1	Height 2	Weight
2PZS210	198	47	511	541	13.2
3PZS315	198	65	511	541	18.7
4PZS420	198	83	511	541	24.3
5PZS525	198	101	511	541	29.7
6PZS630	198	119	511	541	35.3
7PZS735	198	137	511	541	40.8
8PZS840	198	155	511	541	46.3
9PZS945	198	173	511	541	51.8
10PZS1050	198	191	511	541	57.3

Cell Type	Length (b)	Width (l)	Height 1	Height 2	Weight
2PZS310	198	47	714	744	17.5
3PZS465	198	65	714	744	25.5
4PZS620	198	83	714	744	33.8
5PZS775	198	101	714	744	39.6
6PZS930	198	119	714	744	48.0
7PZS1085	198	137	714	744	55.6
8PZS1240	198	155	714	744	63.0
9PZS1395	198	173	714	744	70.2
10PZS1550	198	191	714	744	78.3

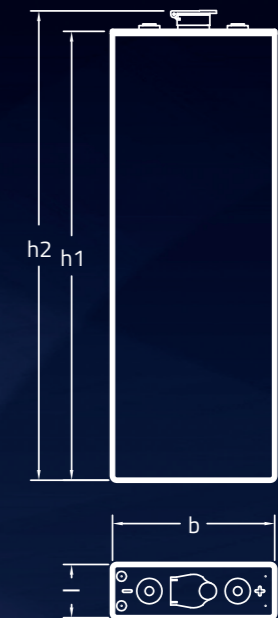
Cell Type	Length (b)	Width (l)	Height 1	Height 2	Weight
2PZB110	158	47	402	432	7.7
3PZB165	158	63	402	432	10.7
4PZB220	158	78	402	432	13.7
5PZB275	158	94	402	432	16.8
6PZB330	158	110	402	432	19.8
7PZB385	158	126	402	432	22.8
8PZB440	158	142	402	432	25.8
9PZB495	158	158	402	432	29.0
10PZB550	158	174	402	432	32.1
11PZB605	158	190	402	432	35.1
12PZB660	158	206	402	432	38.1

Cell Type	Length (b)	Width (l)	Height 1	Height 2	Weight
2PZB172	158	47	568	598	11.2
3PZB258	158	63	568	598	15.6
4PZB344	158	78	568	598	20.1
5PZB430	158	94	568	598	24.5
6PZB516	158	110	568	598	29.0
7PZB602	158	126	568	598	33.3
8PZB688	158	142	568	598	37.8
9PZB774	158	158	568	598	42.4
10PZB860	158	174	568	598	46.9
11PZB946	158	190	568	598	51.3
12PZB1032	158	206	568	598	55.7

Cell Type	Length (b)	Width (l)	Height 1	Height 2	Weight
2PZB130	158	47	454	484	8.9
3PZB195	158	63	454	484	12.4
4PZB260	158	78	454	484	15.8
5PZB325	158	94	454	484	19.3
6PZB390	158	110	454	484	22.7
7PZB455	158	126	454	484	26.1
8PZB520	158	142	454	484	29.7
9PZB585	158	158	454	484	33.2
10PZB650	158	174	454	484	36.8
11PZB715	158	190	454	484	40.3
12PZB780	158	206	454	484	43.7

Cell Type	Length (b)	Width (l)	Height 1	Height 2	Weight
2PZB200	158	47	600	630	11.9
3PZB300	158	63	600	630	16.7
4PZB400	158	78	600	630	21.5
5PZB500	158	94	600	630	26.2
6PZB600	158	110	600	630	30.9
7PZB700	158	126	600	630	35.7
8PZB800	158	142	600	630	40.5
9PZB900	158	158	600	630	45.3
10PZB1000	158	174	600	630	50.1
11PZB1100	158	190	600	630	54.9
12PZB1200	158	206	600	630	59.6

Cell Type	Length (b)	Width (l)	Height 1	Height 2	Weight
2PZB150	158	47	515	545	9.6
3PZB225	158	63	515	545	13.3
4PZB300	158	78	515	545	17.1
5PZB375	158	94	515	545	20.8
6PZB450	158	110	515	545	24.5
7PZB525	158	126	515	545	28.2
8PZB600	158	142	515	545	32.0
9PZB675	158	158	515	545	35.8
10PZB750	158	174	515	545	39.6
11PZB825	158	190	515	545	43.4
12PZB900	158	206	515	545	47.1



APPLICATIONS: FORKLIFTS | CLEANING MACHINES | ACCESS PLATFORMS | ELECTRIC TOW TRACTORS | ELECTRIC VEHICLES

APPLICATIONS: FORKLIFTS | CLEANING MACHINES | ACCESS PLATFORMS | ELECTRIC TOW TRACTORS | ELECTRIC VEHICLES

IBCS

0845 208 8748 | www.ibcs.co.uk

INDUSTRIAL BATTERY
AND CHARGER SERVICES LTD

Traction Battery Chargers



The **Intelligent Choice**
TO KEEP YOUR BUSINESS MOVING

APPLICATIONS: FORKLIFTS | CLEANING MACHINES | ACCESS PLATFORMS | ELECTRIC TOW TRACTORS | ELECTRIC VEHICLES

IBCS

0845 208 8748 | www.ibcs.co.uk

INDUSTRIAL BATTERY AND CHARGER SERVICES LTD

The importance of matching the correct charger with the battery cannot be underestimated as using an incorrect charger will inevitably result in premature battery failure. At Industrial Battery and Charger Services we have a complete range of chargers to suit all motive power applications. We are able to offer help and advice on all aspects of battery charging and our service engineers are able to repair and maintain all types of battery chargers in use today.

OUR BRANDS



AXIMA



- Forklift battery chargers supplied with 5 years warranty
- Extensive stocks of new and refurbished chargers
- Comprehensive range of high frequency chargers
- Stock of charger spares always available

APPLICATIONS: FORKLIFTS | CLEANING MACHINES | ACCESS PLATFORMS | ELECTRIC TOW TRACTORS | ELECTRIC VEHICLES

ALL ENQUIRIES: 0845 208 8748 | www.ibcs.co.uk



SHIFTING THE LIMITS

Battery Charging Systems for Intralogistics

Fronius Selectiva charging systems are highly intelligent. Charging systems for drive batteries need a special type of intelligence. Since every battery is different, the Selectiva series automatically recognises age and charge level to provide a precise charge. This increases the service life and efficiency of the battery and reduces the amount of maintenance. It is a question of **intelligent technology**. The proven Selectiva series with four power classes and housing versions offers a complete product range for 12, 24, 36, 48, 72 and 80 volt batteries.

SELECTIVA 1KW



Due to its **efficiency of up to 96%**, every seventh charge is free. The Selectiva charger with Active Inverter Technology gently charges your batteries and may increase their **service life by up to 25%**.

SELECTIVA PLUS 3KW



The tried and tested range for medium to large forklift batteries with power output of 3 kW. Compact design, simple handling and the especially effective Active Inverter Technology make Selectiva Plus devices **attractive to intralogistics professionals**.

SELECTIVA PLUS RI 8KW



The successful Active Inverter Technology with the **revolutionary Ri-charging process** adapts itself to the requirements of the battery and only charges the battery with the current that it actually needs.

SELECTIVA PLUS RI 16KW



The **successful Active Inverter Technology** with the revolutionary Ri-charging process adapts itself to autoselect battery capacity and battery voltage.

APPLICATIONS: FORKLIFTS | CLEANING MACHINES | ACCESS PLATFORMS | ELECTRIC TOW TRACTORS | ELECTRIC VEHICLES

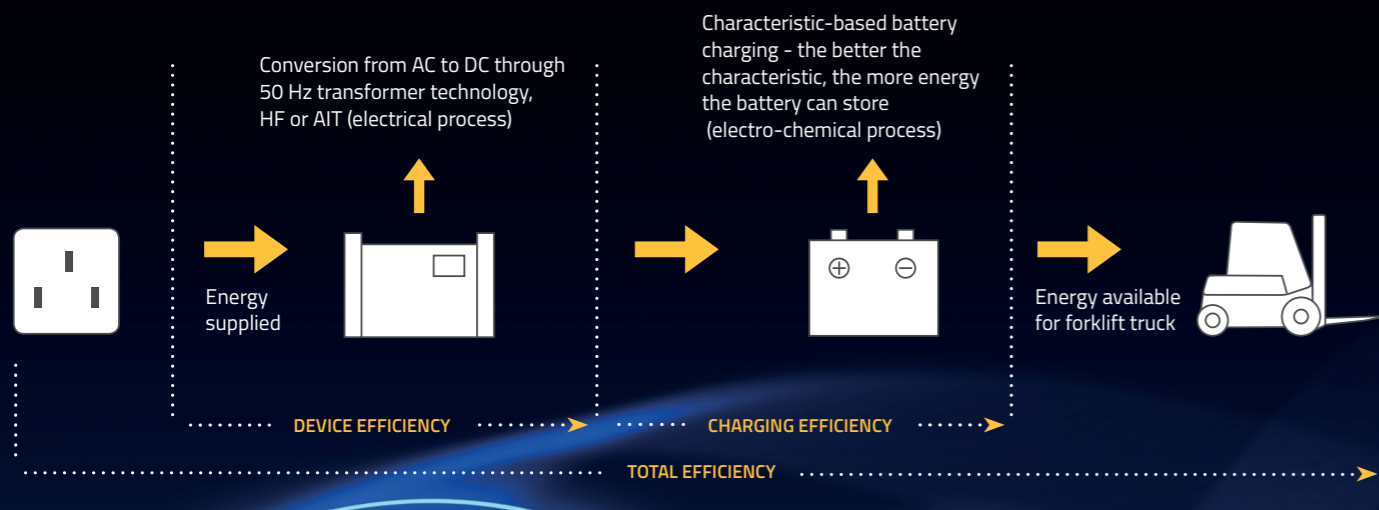
The proven Selectiva series with four power classes and housing versions offers a complete product range for 12, 24, 36, 48, 72 and 80 volt forklift batteries.



MAXIMUM ENERGY EFFICIENCY

When charging a traction battery, the flow of energy from the socket via the charger to the battery is represented in the form of total efficiency. As a first step, the energy coming from the socket into the battery charger is converted from AC to DC. What is important here is the battery charging technology that the charger employs.

This electrical process determines the device efficiency. This is followed by an electrochemical process in which the battery is charged by means of a charging characteristic, which is referred to as charging efficiency. **Multiplying both processes together gives the total efficiency.**



TECHNOLOGY	DEVICE EFFICIENCY	CHARGING EFFICIENCY	TOTAL EFFICIENCY
50 Hz	80%	70%	56%
HF	90%	75%	68%
Fronius AIT	92%	80%	74%
Fronius AIT with Ri	93%	90%	84%

APPLICATIONS: FORKLIFTS | CLEANING MACHINES | ACCESS PLATFORMS | ELECTRIC TOW TRACTORS | ELECTRIC VEHICLES

RI CHARGING PROCESS

The RI charging process adapts to the demands on each battery and only charges the battery with the current that it really needs according to its age and state of charge. Gassing and/or battery warming is therefore minimised resulting in maximum battery service life.

LESS MAINTENANCE

Charging processes that are adapted to the demands of the battery prevent uncontrolled overloads and decrease maintenance requirements (less water required, less work). The service life of the battery increases as a result. It is possible to recover / recharge deeply discharged, and sulphated batteries, using one of the unique charging profiles that are pre-programmed into the Selectiva Plus models.

SELECTION TABLE

BATTERY VOLTAGE	WET BATTERIES (PzS)										VRLA BATTERY			DEVICE TYPE	COMPARATIVE TABLE FOR NOMINAL VOLTAGE	POWER SUPPLY VOLTAGE CURRENT	HOUSING
	6h	7h	8h	9h	10h	11h	12h	13h	14h	10h	12h	14h					
CAPACITY (Ah)																	
12V	110	135	165	195	225	250					120	140	160	Selectiva 1020	12V - 25A	E230V/2A	1
	160	190	240	300	345	375					180	200	220	Selectiva 1030	12V - 40A	E230V/2A	1
24V	52	65	80	95	110	125					55	70	85	Selectiva 2010	24V - 15A	E230V/2A	1
	80	100	125	150	170	185					80	105	120	Selectiva 2015	24V - 20A	E230V/2A	1
	110	135	165	195	225	250					120	140	160	Selectiva 2020	24V - 25A	E230V/2A	1
	180	210	260	320	360	400					190	205	220	Selectiva 2032	24V - 40A	E230V/4A	1
	200	230	290	345	395	440					220	250	280	Selectiva 2040	24V - 45A	E230V/7A	1
	185	240	290	345	395	445	495	545	595		220	250	280	Selectiva Plus 2035	24V - 45A	E230V/6A	2
	280	365	440	520	595	675	750	825	900		280	330	420	Selectiva Plus 2050	24V - 60A	E230V/7A	2
	365	470	575	680	775	875	980	1070	1170		360	430	540	Selectiva Plus 2065	24V - 80A	E230V/9A	2
	450	580	710	830	950	1075	1200	1320	1440		440	530	670	Selectiva Plus 2080	24V - 100A	E230V/11A	2
	560	730	880	1040	1190	1350	1500	1650	1800		560	670	835	Selectiva Plus 2100	24V - 120A	E230V/16A	2
	560	730	880	1040	1190	1350	1500	1650	1800		560	670	835	Selectiva 2100	24V - 120A	400V/6A	3
	670	870	1060	1250	1430	1600	1800	1980	2160		670	800	1000	Selectiva 2120	24V - 145A	400V/7A	3
	800	1000	1240	1450	1680	1880	2100	2310	2520		780	930	1170	Selectiva 2140	24V - 170A	400V/8A	3
	930	1150	1420	1650	1920	2140	2400	2640	2880		900	1170	1350	Selectiva 2160	24V - 190A	400V/9A	3
1010	1305	1595	1875	2150	2407	2700	2970	3240					Selectiva 2180	24V - 220A	400V/11A	3	
1120	1450	1770	2080	2390	2675	3000	3300	3600					Selectiva 2200	24V - 240A	400V/12A	3	
36V/48V	140	180	220	260	300	335	375	410	450	140	170	210	Selectiva Plus 4025	48V - 30A	E230V/7A	2	
	185	240	290	345	395	445	495	545	595	220	250	280	Selectiva Plus 4035	48V - 45A	E230V/10A	2	
	280	365	440	520	595	675	750	825	900	280	330	420	Selectiva Plus 4050	48V - 60A	E230V/16A	2	
	340	440	530	620	720	800	900	990	1080	340	400	505	Selectiva 4060	48V - 70A	400V/8A	3	
	420	545	660	780	890	1015	1125	1240	1350	420	490	620	Selectiva 4075	48V - 90A	400V/9A	3	
	505	655	795	935	1075	1200	1350	1485	1620	505	600	750	Selectiva 4090	48V - 110A	400V/10A	3	
	670	870	1060	1250	1430	1600	1800	1980	2160	670	800	1000	Selectiva 4120	48V - 145A	400V/13A	3	
	800	1000	1240	1450	1680	1880	2100	2310	2520	780	930	1170	Selectiva 4140	48V - 170A	400V/15A	3	
	870	1085	1345	1575	1825	2040	2280	2508	2740	850	1010	1270	Selectiva 4160	48V - 190A	400V/15A	3	
	225	290	355	415	480	535	600	660	720	225	265	335	Selectiva 8040	80V - 50A	400V/8A	3	
80V/72V	340	440	530	620	720	800	900	990	1080	340	400	505	Selectiva 8060	80V - 70A	400V/11A	3	
	420	545	660	780	890	1015	1125	1240	1350	420	490	620	Selectiva 8075	80V - 90A	400V/13A	3	
	495	635	770	910	1040	1170	1300	1430	1570	480	580	720	Selectiva 8090	80V - 110A	400V/15A	3	
	670	870	1060	1250	1430	1600	1800	1980	2160	670	800	1000	Selectiva 8120	80V - 145A	400V/22A	4	
	800	1000	1240	1450	1680	1880	2100	2310	2520	780	930	1170	Selectiva 8140	80V - 170A	400V/25A	4	
	930	1150	1420	1650	1920	2140	2400	2640	2880	900	1170	1350	Selectiva 8180	80V - 190A	400V/28A	4	
	1000	1250	1550	1790	2090	2330	2610	2870	3130	970	1260	1460	Selectiva 8180	80V - 220A	400V/30A	4	

APPLICATIONS: FORKLIFTS | CLEANING MACHINES | ACCESS PLATFORMS | ELECTRIC TOW TRACTORS | ELECTRIC VEHICLES



Forklift and Traction Battery HF Modular Chargers

Since its establishment in 1991, **AXIMA** has experienced strong growth through **high-quality products** and engineers. In house development of battery chargers is based not only on the latest trends and innovations, but more importantly on the needs and requirements of our customers. This has led to **worldwide success** with blue chip companies such as BMW, Airbus, Volkswagen, Dachser and Škoda.

FORTIS MINI HF BATTERY CHARGER

Small but powerful the **FORTIS MINI** has simple and fully automatic traction battery charging capabilities.

Optimised HF charging technology **accelerates charging, prolongs working life of batteries and saves energy.**

This is a fully automatic battery charger which is simple and easy to use.



FORTIS HF MODULAR BATTERY CHARGER

FORTIS is an easily controllable, simple and fully automatic traction battery charger.

Optimised HF charging technology **accelerates charging, prolongs working life of batteries and saves energy.**



FLEXIS HF BATTERY CHARGER

FLEXIS is a fully programmable, high-frequency charger of traction and stationary batteries.

Optimised charging technology **prolongs the working life of a battery, accelerates charging and saves energy.**



IP54-RATED WEATHERPROOF CHARGER

AXITrac PSC is designed for environments that require **higher IP protection and stainless steel design.**

- For example:
- food
 - mining
 - coldstores



APPLICATIONS: FORKLIFTS | CLEANING MACHINES | ACCESS PLATFORMS | ELECTRIC TOW TRACTORS | ELECTRIC VEHICLES

FORTIS MINI HF BATTERY CHARGER

Small but POWERFUL

Small but powerful the **FORTIS MINI** with simple and fully automatic traction battery charging.

Optimised HF charging technology **accelerates charging, prolongs working life** of batteries and **saves energy.**

This is a fully automatic battery charger which is simple and easy to use.



SELECTION TABLE SINGLE PHASE

Output Voltage (VDC)	Max. Output Current	Type	Mains (VAC)	Mains Protection (A)	Case	Range of Capacities (Ah)
24	20	FORTIS Mini 24E20	1ph 230	6	S	65-210
	40	FORTIS Mini 24E40		10	M	135-375
	60	FORTIS Mini 24E60		10	L	270-620
	80	FORTIS Mini 24E80		16	L	375-840

SETTING THE CHARGER

Type	Battery capacity setting (Ah) - Count of blinks of green LED									
	1	2	3	4	5	6	7	8	9	
FORTIS Mini 24E20	65	75	85	105	120	135	150	180	210	
FORTIS Mini 24E40	135	150	180	210	240	270	300	345	375	
FORTIS Mini 24E60	270	300	345	375	420	465	500	560	620	
FORTIS Mini 24E80	375	420	465	500	560	620	675	750	840	
					8 Hours			8 - 10 Hours		10 - 12 Hours

Type	Charging curve setting - Count of blinks of red LED				
	1	2	3	4	5
FORTIS Mini all types	IUa dU	IUa CF	IUa GEL 2,65	IUa GEL Ex	IUa

APPLICATIONS: FORKLIFTS | CLEANING MACHINES | ACCESS PLATFORMS | ELECTRIC TOW TRACTORS | ELECTRIC VEHICLES

FORTIS MINI HF BATTERY CHARGER

Small
but **POWERFUL**



TECHNICAL DATA

Input voltage range	-10 %, +15%
Recommended protection	Circuit breaker with C or D characteristics
Efficiency	up to 94%
Power factor	0.98 (single-phase power supply)
Output voltage tolerance	±1 %
Output current tolerance	±2 %
Safety (LVD)	EN 60950-1
EMC resistance	EN 61000-6-2
EMC emission	EN 61000-6-4
Protection class	I
Degree of protection	IP20
Cooling	forced ventilation
Working environment	-10 °C to +40 °C, max. relative humidity 95%, non condensating
Storage	in dry areas -25 °C to +80 °C, max. relative humidity 95%

DIMENSIONS

Type	Case	H	W	D
FORTIS mini 24E20	S	200	148	77
FORTIS mini 24E40	M	234 (280)*	174	90
FORTIS mini 24E60	L	349 (395)*	243	90
FORTIS mini 24E80	L	349 (395)*	243	90

*With mounting brackets.

APPLICATIONS: FORKLIFTS | CLEANING MACHINES | ACCESS PLATFORMS | ELECTRIC TOW TRACTORS | ELECTRIC VEHICLES

FORTIS HIGH FREQUENCY MODULAR CHARGER

Traction
Battery
CHARGER

The Fortis traction battery charger range is user friendly with high reliability. It's **robust design** makes it suitable for hard working environments.

High **stability and efficiency** helps to **save operating costs.**



PRECISE CHARGE



- **EXTREMELY RELIABLE**
- **SHORT CIRCUIT PROOF OUTPUT**
- **SAVES OPERATING EXPENSES**
- **MODULAR SYSTEM**
- **PRESET CHARGING CURVES**

- Efficiency up to 94%, power factor cos ~1
- Active PFC and softstart
- Verification of connected battery
- Galvanic separated mains - output
- Regeneration charging - desulphation and equalisation
- Short circuit and reverse polarity proof output
- Optimised HF charging technology accelerates charging, prolongs working life of batteries and saves energy
- Fortis battery chargers are made to meet the hard requirements of a three shift operation
- Operates in industrial areas

Operational stages are signalled by three big LED lights, status of charging is visible from long distance. Output current is adjustable to battery capacity, operating stages are shown by three LED lights. FORTIS chargers comply with European standards of using PFC at electronic devices.

For further information on the Flexis HF Battery Charger and the IP54-Rated Weatherproof Charger please contact us on 0845 2088748

APPLICATIONS: FORKLIFTS | CLEANING MACHINES | ACCESS PLATFORMS | ELECTRIC TOW TRACTORS | ELECTRIC VEHICLES

OPTIONAL EQUIPMENT

- External signaling - signal column / alarm
- Two digital inputs for remote control
- Temperature sensor - compensation of charging voltage according to battery temperature
- Two potential-free outputs



Temperature sensor Outputs for external signaling

SELECTION TABLE

Type	Output Voltage (V)	Max. Output current (A)	Mains (VAC)	Input current (A)	Mins protection (A)	Case	Charging time/ battery capacity (Ah max.)			
							8hrs	10hrs	12hrs	
24E60	24	60	230	8.7	10	FF130	445	630	815	
24E100		100	230	14.1	16	FF130	630	900	1160	
24D100		100	3X400	4.9	6	FF130	630	900	1160	
24D200		200	3X400	9.8	10	FF250	1265	1800	2320	
48E40	48	40	230	12.4	13	FF130	240	320	500	
48E50		50	230	14.1	16	FF130	315	450	580	
48D50		50	3X400	4.9	6	FF130	315	450	580	
48D100		100	3X400	8.0	10	FF250	580	825	1065	
48D150		150	3X400	12.9	16	FF250	900	1275	1645	
48D200		200	3X400	16.0	20	FF250	1160	1650	2130	
80E25		80	25	230	14.1	16	FF130	160	225	290
80D25			25	3X400	4.9	6	FF130	160	225	290
80D50	50		3X400	8.0	10	FF130	315	450	580	
80D75	75		3X400	12.9	16	FF250	47	680	870	
80D100	100		3X400	16.0	20	FF250	360	900	1160	
80D125	125		3X400	20.9	25	FF330	790	1130	1450	
80D150	150		3X400	24.0	32	FF330	950	1350	1740	
80D175	175		3X400	28.9	32	FF550	1100	1575	2035	
80D200	200		3X400	32.0	40	FF550	-	-	-	
80D225	225		3X400	36.9	40	FF720	-	-	-	

*Intended also for 96V and 110V Batteries. Other types on request

Efficiency	Up to 94%
Output voltage stability	plus1%
Cooling	Forced ventilation

Degree of protection	IP20
Operating conditions	minus 10oc to plus 40oc
protection class	I

Case	H	W	D	X*	Y*
FF130	477	302	135	230	515
FF170	477	302	169	230	515
FF250	477	302	254	230	515
FF330	477	302	339	230	515
FF550	477	547	339	499	515
FF720	477	712	339	669	515

Dimensions in mm * Fastening holes spacing

APPLICATIONS: FORKLIFTS | CLEANING MACHINES | ACCESS PLATFORMS | ELECTRIC TOW TRACTORS | ELECTRIC VEHICLES



Established in 1932 by the founding family members, Powergen produce a range of robust and functional battery chargers suitable for rugged industrial environments.

CEMB

The **CEMB 3000 series** is designed to recharge small to medium sized traction batteries.

With proven 50 Hz technology this robust charger technology is suitable for a wide range of applications.



REVOLUTION

The battery chargers of the **REVOLUTION series** are designed to recharge medium – large capacity lead acid traction batteries. They have been developed using over **forty-years technical experience** of the founding family.



COMPACT

The battery chargers of the **COMPACT series** are designed to recharge medium and large capacity lead acid traction batteries.



APPLICATIONS: FORKLIFTS | CLEANING MACHINES | ACCESS PLATFORMS | ELECTRIC TOW TRACTORS | ELECTRIC VEHICLES

CEMB SELECTION TABLE - SINGLE PHASE

Type	Output Voltage (V)	Output Current	Mains (VAC)	Input current (A)	Dimensions	Charging time/ battery capacity (Ah max.)		
						8hrs	10hrs	12hrs
24v20a-01-PG	24	20	240	3	L280 W330 H200	-	110	140
24v25a-01-PG		25	240	4	L280 W330 H200	-	150	175
24v30a-01-PG		30	240	5	L280 W430 H300	-	180	210
24v40a-01-PG		40	240	6	L280 W430 H300	-	220	280
24v50a-01-PG		50	240	8	L280 W430 H300	-	300	340
24v60a-01-PG		60	240	9	L280 W430 H300	-	350	400
36v15a-01-PG	36	15	240	4	L280 W330 H200	-	90	105
36v20a-01-PG		20	240	5	L280 W430 H300	-	110	140
36v25a-01-PG		25	240	6	L280 W430 H300	-	150	175
36v30a-01-PG		30	240	7	L280 W430 H300	-	180	210
36v40a-01-PG		40	240	9	L280 W430 H300	-	220	280

REVOLUTION SELECTION TABLE - SINGLE PHASE

Type	Type	Output Current	Mains (VAC)	Input current (A)	Dimensions	Charging time/ battery capacity (Ah max.)		
						8hrs	10hrs	12hrs
24v60a-01-PG	24	60A	240	9	L580 W365 H450	330	350	400
24v80a-01-PG		80A	240	13	L580 W365 H450	440	480	550
24v100a-01-PG		100A	240	16	L580 W365 H450	550	610	680
24v120a-01-PG		120A	240	19	L580 W365 H450	660	750	800
36v60a-01-PG	36	60A	240	16	L580 W365 H450	330	360	390
36v80a-01-PG		80A	240	25	L580 W365 H450	440	480	520
36v100a-01-PG		100A	240	32	L580 W365 H450	550	600	650
48v60a-01-PG	48	60A	240	19	L580 W365 H450	330	350	400
48v80a-01-PG		80A	240	25	L580 W365 H450	440	480	550
48v100a-01-PG		100A	240	31	L580 W365 H450	550	610	680
72v60a-01-PG	72	60A	240	28	L580 W365 H450	330	350	400
72v80a-01-PG		80A	240	38	L580 W365 H450	440	480	550
80v60a-01-PG	80	60A	240	31	L580 W365 H450	330	350	400
80v80a-01-PG		80A	240	42	L580 W365 H450	440	480	550

APPLICATIONS: FORKLIFTS | CLEANING MACHINES | ACCESS PLATFORMS | ELECTRIC TOW TRACTORS | ELECTRIC VEHICLES

REVOLUTION SELECTION TABLE - THREE PHASE

Type	Type	Output Current	Mains (VAC)	Input current (A)	Dimensions	Charging time/ battery capacity (Ah max.)		
						8hrs	10hrs	12hrs
24v60a-03-PG	24	60A	400	4	L580 W365 H450	330	360	390
24v80a-03-PG		80A	400	5	L580 W365 H450	440	480	520
24v100a-03-PG		100A	400	6	L580 W365 H450	550	600	650
24v120a-03-PG		120A	400	19	L580 W365 H450	660	720	780
36v60a-03-PG	36	60A	400	5	L580 W365 H450	330	360	390
36v80a-03-PG		80A	400	7	L580 W365 H450	440	480	520
36v100a-03-PG		100A	400	9	L580 W365 H450	550	600	650
36v120a-03-PG		120A	400	11	L580 W365 H450	660	720	780
48v60a-03-PG	48	60A	400	7	L580 W365 H450	330	360	390
48v80a-03-PG		80A	400	10	L580 W365 H450	440	480	520
48v100a-03-PG		100A	400	12	L580 W365 H450	550	600	650
72v60a-03-PG	72	60A	400	11	L580 W365 H450	330	360	390
72v80a-03-PG		80A	400	14	L580 W365 H450	440	480	520
80v60a-03-PG	80	60A	400	12	L580 W365 H450	330	360	390
80v80a-03-PG		80A	400	16	L580 W365 H450	440	480	520

COMPACT SELECTION TABLE - SINGLE PHASE

Type	Type	Output Current	Mains (VAC)	Input current (A)	Dimensions	Charging time/ battery capacity (Ah max.)		
						8hrs	10hrs	12hrs
24v140a-01-PG	24	140A	230	28	L470 W465 H700	770	910	960
48v120a-01-PG	48	120A	230	38	L470 W465 H700	660	750	800
48v140a-01-PG		140A	230	50	L470 W465 H700	715	910	960
80v100a-01-PG	80	100A	230	63	L470 W465 H700	550	610	680

COMPACT SELECTION TABLE - THREE PHASE

Type	Type	Output Current	Mains (VAC)	Input current (A)	Dimensions	Charging time/ battery capacity (Ah max.)		
						8hrs	10hrs	12hrs
24v140a-03-PG	24	140A	400	8	L470 W465 H700	770	840	910
24v160a-03-PG		160A	400	9	L470 W465 H870	880	960	1040
48v120a-03-PG	48	120A	400	13	L470 W465 H870	660	720	780
48v140a-03-PG		140A	400	15	L470 W465 H870	770	840	910
48v160a-03-PG		160A	400	16	L470 W465 H870	880	960	1040
72v100a-03-PG	72	100A	400	17	L470 W465 H870	550	600	650
72v120a-03-PG		120A	400	20	L470 W465 H870	660	720	780
80v100a-03-PG	80	100A	400	20	L470 W465 H870	550	600	650
80v120a-03-PG		120A	400	24	L470 W465 H870	660	720	780
80v140a-03-PG		140A	400	28	L470 W465 H870	770	840	910
80v160a-03-PG		160A	400	32	L565 W500 H960	880	960	1040

APPLICATIONS: FORKLIFTS | CLEANING MACHINES | ACCESS PLATFORMS | ELECTRIC TOW TRACTORS | ELECTRIC VEHICLES

IBCS

0845 208 8748 | www.ibcs.co.uk

INDUSTRIAL BATTERY
AND CHARGER SERVICES LTD

The Complete Service Solution



The **Intelligent Choice**
TO KEEP YOUR BUSINESS MOVING

APPLICATIONS: FORKLIFTS | CLEANING MACHINES | ACCESS PLATFORMS | ELECTRIC TOW TRACTORS | ELECTRIC VEHICLES

THE COMPLETE SERVICE SOLUTION

IBCS can offer **nationwide service** by **fully trained battery and charger engineers**, with same or next day response to ensure our customer's equipment is kept moving, minimising disruption to their business.

There's a **wealth of experience on hand**, which means we can offer assistance, and provide independent advice to our customers. We have recently increased our salesforce to cope with demand, and further **develop our business**.

NATIONWIDE COVERAGE

IBCS is one of the very few companies that offer a rapid nationwide service throughout the week, with an option to provide a bespoke 24 hour, 7 day a week plan. This is recognition that customer's need prompt individual attention at all times.

Nationwide coverage coupled with local expert knowledge and technical after-sales support is an essential element of the IBCS strategy to, 'Keep Business Moving'.

The IBCS package provides a bespoke single source for battery, charger and accessory installation, maintenance and repair.



Whatever your industry
IBCS is the
intelligent
nationwide choice

IBCS
NATIONWIDE
CARE & SERVICE

APPLICATIONS: FORKLIFTS | CLEANING MACHINES | ACCESS PLATFORMS | ELECTRIC TOW TRACTORS | ELECTRIC VEHICLES

ALL MAKES SERVICE PLAN

IBCS engineers are all highly skilled and trained in the repair, servicing and maintenance of all types of battery and charger products. With over 30 years of industry experience IBCS engineers can service and maintain all types of battery and charger products.

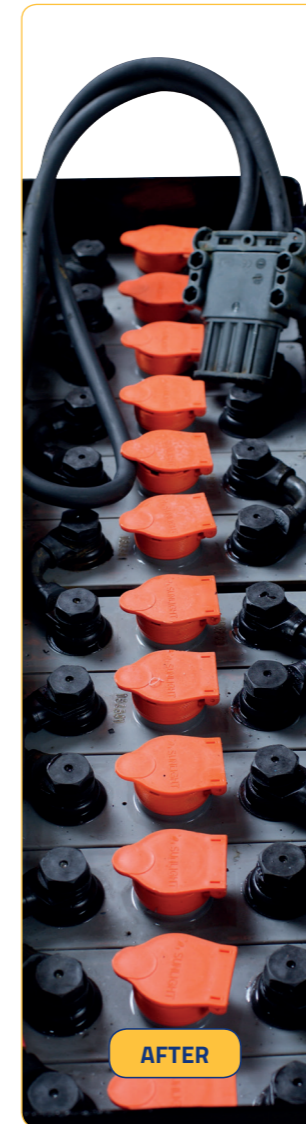
BATTERY STRIP & REFIT

With the cost of batteries increasing, and the need to ensure valuable assets are properly maintained, IBCS offer a strip and refit service to ensure batteries are kept in optimum condition.

Our engineers remove the cells from the tank, clean and paint the battery tank and refit the cells. Acid levels are checked and specific gravity is adjusted to ensure the battery is operating as efficiently as possible.



BEFORE



AFTER

APPLICATIONS: FORKLIFTS | CLEANING MACHINES | ACCESS PLATFORMS | ELECTRIC TOW TRACTORS | ELECTRIC VEHICLES

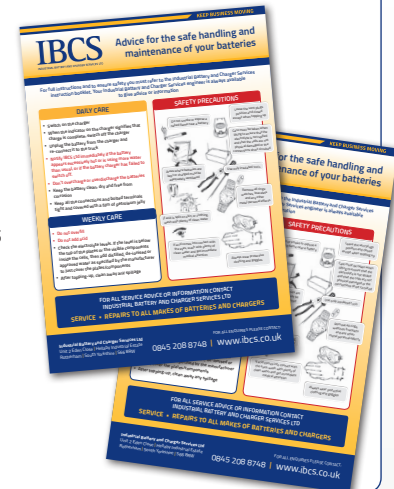
CHARGER INSTALLATION

Not only do IBCS supply a comprehensive range of quality chargers, a complete installation service is available using our team of qualified engineers



BATTERY CARE AND TRAINING

The effective training of operators and fork lift drivers in the safe use and maintenance of fork lift batteries is paramount. IBCS offer comprehensive training on battery care and maintenance. This can be completed on the customers site, or at our facility in Rotherham. This is essential in today's Health and Safety environment.



REAL TIME DATA

Our service engineers are equipped with the latest mobile devices. This allows our service team to gather and communicate information and images in real time.

The ability to provide completed service sheets with photographs promptly on completion of work is a great benefit to our customers.

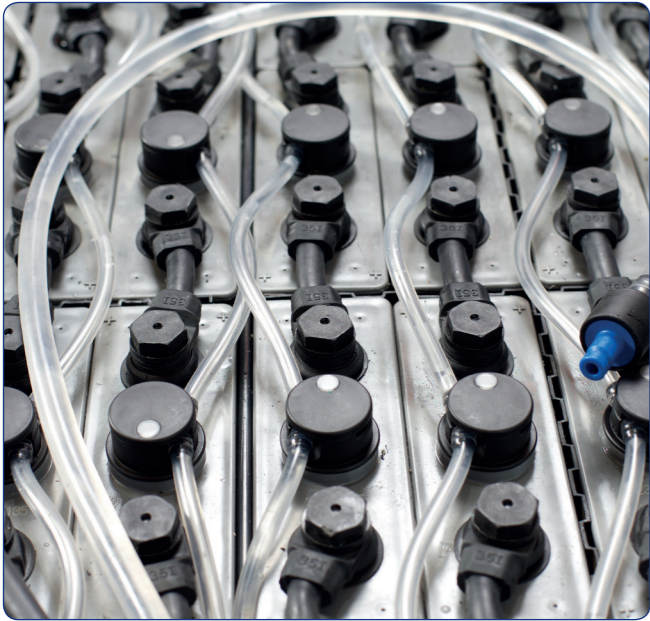
MAINTENANCE AND TOPPING UP CONTRACTS

Contracts can be extended to cover maintenance and topping up of batteries.

SERVICES AND ACCESSORIES

BATTERY WATERING SYSTEMS

IBCS offer a complete range of battery filling systems including the BFS and Aquajet systems.



TROLLEYS AND GUNS

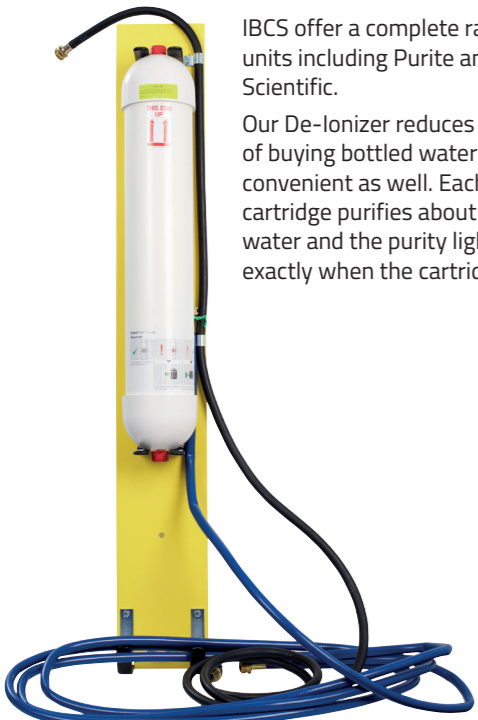
No battery room should be without this essential battery maintenance tool. Simply connect the watering gun to a standard hose or the Philadelphia Scientific Water Deioniser. Insert the tip of the watering gun in the cell and pull the ergonomic trigger. The watering gun automatically shuts off at exactly the right level. The Philadelphia Scientific Watering Gun dramatically speeds up the process of watering industrial batteries and improves operator safety.



DEIONNISER UNIT

IBCS offer a complete range of deionising units including Purite and Philadelphia Scientific.

Our De-Ionizer reduces the high price of buying bottled water and it's more convenient as well. Each disposable cartridge purifies about 600 gallons of water and the purity light will tell you exactly when the cartridge is used up.



REPLACEMENT CARTRIDGES PS600 CARTRIDGE

HydroPure Deionizer cartridge, 600 gallon.



APPLICATIONS: FORKLIFTS | CLEANING MACHINES | ACCESS PLATFORMS | ELECTRIC TOW TRACTORS | ELECTRIC VEHICLES

SERVICES AND ACCESSORIES

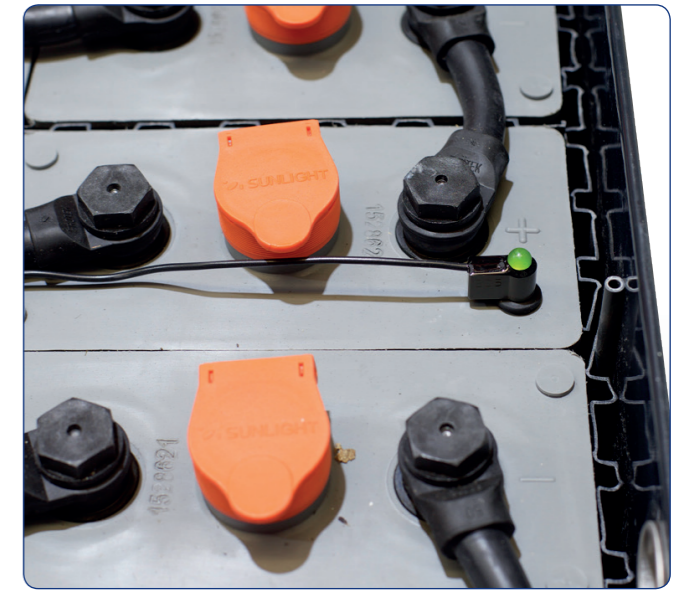
MANUAL TOPPING UP BOTTLE

A manually pressurised topping up bottle to be used in conjunction with BFS Filling System. The bottle is supplied with a flow indicator and a BFS filler and connector.



LEVEL INDICATORS

A low electrolyte level in your battery will cause permanent damage to the cells. By fitting a Blinky or Smart Blinky you can help ensure your electrolyte levels are never low.



BATTERY MANAGEMENT SYSTEMS

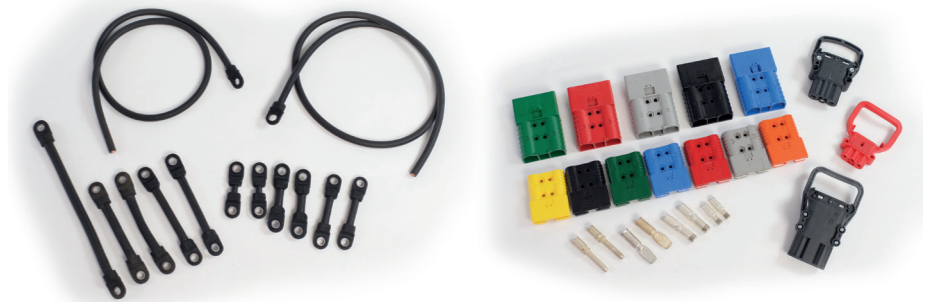
IBCS offer a number of battery management solutions from a range of manufacturers to enable a solution specific to our customers' requirements.



BATTERY ACCESSORIES: CONNECTORS, PLUGS AND CABLES

IBCS uses its worldwide base of industry contacts to source the best quality tried and tested battery connectors and accessories available.

Customers can be sure that 30 years purchasing experience maintains their position as battery industry leaders. Connectors and accessories for linking batteries together is a core requisite for ensuring everything works together.



APPLICATIONS: FORKLIFTS | CLEANING MACHINES | ACCESS PLATFORMS | ELECTRIC TOW TRACTORS | ELECTRIC VEHICLES

IBCS

0845 208 8748 | www.ibcs.co.uk

INDUSTRIAL BATTERY
AND CHARGER SERVICES LTD

The Total Hire Solution



The **Intelligent Choice**
TO KEEP YOUR BUSINESS MOVING

APPLICATIONS: FORKLIFTS | CLEANING MACHINES | ACCESS PLATFORMS | ELECTRIC TOW TRACTORS | ELECTRIC VEHICLES

IBCS

0845 208 8748 | www.ibcs.co.uk

INDUSTRIAL BATTERY AND CHARGER SERVICES LTD

We can provide both forklift truck batteries and chargers on short or long term hire.

- Fully flexible hire terms (No minimum required)
- Covers all products Including; Cells, Batteries, Chargers, Battery Handling, and Watering Systems
- A wide range of stock always available
- Nationwide service coverage
- Maintained or non-maintained service contracts
- Rent to buy option means ownership of goods once rental period finishes
- Normal or HF chargers including installation
- Free quotation with no obligation



APPLICATIONS: FORKLIFTS | CLEANING MACHINES | ACCESS PLATFORMS | ELECTRIC TOW TRACTORS | ELECTRIC VEHICLES

BATTERY HIRE

We can provide both forklift truck batteries and chargers on short or long term hire. We have a large fleet of batteries and chargers for immediate delivery.

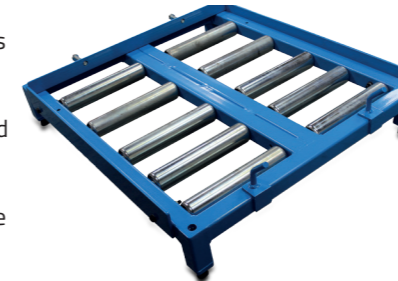
As an independent supplier of traction batteries from the world's leading manufacturers IBCS is able to provide a complete solution for all forklift and traction battery requirements.



ROLLER BEDS

Forklift battery roller bed hire offers an efficient and cost effective solution to handling batteries. They are the ideal solution for those in need of fast battery changing to help keep uptime to its maximum level.

Designed to handle a wide variety of batteries and roll-off heights. These versatile roller beds can even be flipped upside down allowing lower roll-off heights making them even more universal.



BATTERY TUGGERS

IBCS offer some of the best handling equipment on the market today. Options ranging from a single roller stand right through to a fully automated bespoke system, we have you covered. Call us to discuss your requirements.



APPLICATIONS: FORKLIFTS | CLEANING MACHINES | ACCESS PLATFORMS | ELECTRIC TOW TRACTORS | ELECTRIC VEHICLES

CHARGER HIRE

At IBCS we have a complete range of chargers for hire to suit all motive power applications. We are able to offer help and advice, on all aspects of battery charging.

Our service engineers are able to repair and maintain all types of battery chargers in use today.



LIFTING BEAM



Used for applications that require a non-conductive beam such as lifting industrial fork lift truck batteries.

Lightweight units are available for hire and models are available for handling batteries of equal length or of different lengths.



The Intelligent Choice

Industry Leading Warranty - IBCS provide an industry leading **5 year warranty on their products** that is clear and precise with no ambiguity. It provides a full 5 year guarantee for their Motive Power Batteries against faulty workmanship and materials outlined in their customer contracts. **How can they offer this superb warranty? This is linked to a powerful set of business ethics based on:**



ISO 9001 AND RIGHT FIRST TIME

IBCS's Right First Time Quality management system works on the following principle. Defect prevention is more advantageous and cost effective than defect detection and associated re-work.

Certified to ISO 9001 IBCS has a top quality management team to maintain and develop the system so that the standards are at a continually high level. It is brought about by strict and consistent commitment to achieve uniformity of a product in order to satisfy specific customer or user requirements.

As quality managers, IBCS instil the ISO 9001 quality philosophy into the wider organisation, with simple techniques that everyone can use. 'Right first time', also provides a methodology that is easy to apply and can empower people to systematically improve performance.

STAFF TRAINING INCLUDING APPRENTICESHIP SCHEME

Training is a continuous process for the company and its employees.

In house technical training coupled with external supplier product support ensures that the IBCS team is fine tuned to pass on all the latest market developments to its customers.



Many of the team have been employed by the company for many years and clearly understand the technical requirements to build and maintain product to the highest possible level.

There is an apprenticeship scheme that combines practical training whilst studying towards a related qualification. It is supported by working alongside experienced staff to gain job-specific skills and also supports local youth employment.

IBCS also offer bespoke training packages for customers by request.

HEALTH & SAFETY POLICIES

IBCS has a clear health and safety policy that commits them rigorous internal and external standards. An Internal policy document sets out our approach and identifies individual responsibilities to control main hazards from risk assessment.

The policy is reviewed regularly if work process, staff, plant or equipment is changed or modified.

For customers the effective training of operators and forklift truck drivers on the safe and proper use and maintenance is essential in today's Health & Safety conscious environment. Our external training also covers; general health and safety, battery maintenance and care, battery handling and handling scrap.

ECO COMMITMENT

IBCS are fully aware of environmental responsibilities of their business. Working with chemicals and toxic materials needs a good understanding of the industrial battery market. The movement and disposal of waste or scrap batteries, is strictly governed by special waste legislation, and must only be carried out by licensed carriers and disposers. Industrial Battery and Charger Services are continuing to work very closely with the Environment Agency to ensure we are able to provide safe and environmentally sound methods of waste movement and disposal.

NOTES

Lined area for taking notes.

APPLICATIONS: FORKLIFTS | CLEANING MACHINES | ACCESS PLATFORMS | ELECTRIC TOW TRACTORS | ELECTRIC VEHICLES



APPLICATIONS: FORKLIFTS | CLEANING MACHINES | ACCESS PLATFORMS | ELECTRIC TOW TRACTORS | ELECTRIC VEHICLES